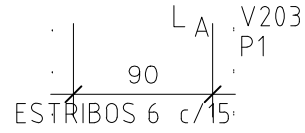
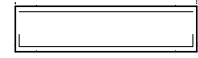


V201

Escala 1:50

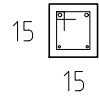
2  $\phi$ 8.0 C TOTAL=90  
90 (1Camada)  
A



10 90 10  
2  $\phi$ 8.0 C TOTAL=110 (1Camada)

SEÇÃO A-A

Escala 1:25

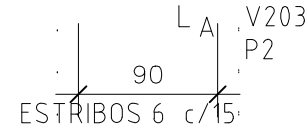
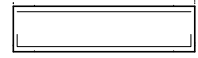


6  $\phi$ 5.0 C TOTAL=50

V202

Escala 1:50

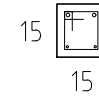
2  $\phi$ 8.0 C TOTAL=90  
90 (1Camada)  
A



10 90 10  
2  $\phi$ 8.0 C TOTAL=110 (1Camada)

SEÇÃO A-A

Escala 1:25

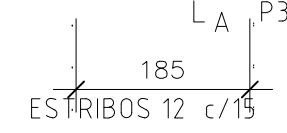
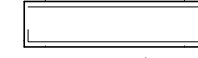


6  $\phi$ 5.0 C TOTAL=50

V203

Escala 1:50

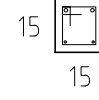
2  $\phi$ 8.0 C TOTAL=185  
185 (1Camada)  
A



10 185 10  
2  $\phi$ 8.0 C TOTAL=205 (1Camada)

SEÇÃO A-A

Escala 1:25

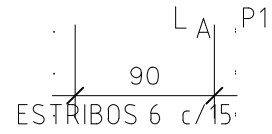


12  $\phi$ 5.0 C TOTAL=50

V101

Escala 1:50

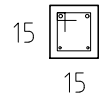
2  $\phi$ 8.0 C TOTAL=90  
90 (1Camada)  
A



10 90 10  
2  $\phi$ 8.0 C TOTAL=110 (1Camada)

SEÇÃO A-A

Escala 1:25

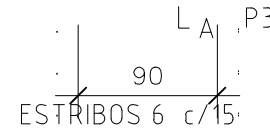


6  $\phi$ 5.0 C TOTAL=50

V102

Escala 1:50

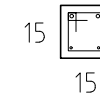
2  $\phi$ 8.0 C TOTAL=90  
90 (1Camada)  
A



10 90 10  
2  $\phi$ 8.0 C TOTAL=110 (1Camada)

SEÇÃO A-A

Escala 1:25

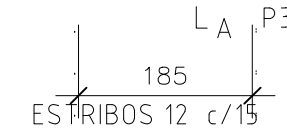
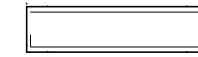


6  $\phi$ 5.0 C TOTAL=50

V103

Escala 1:50

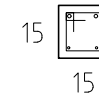
2  $\phi$ 8.0 C TOTAL=185  
185 (1Camada)  
A



10 185 10  
2  $\phi$ 8.0 C TOTAL=205 (1Camada)

SEÇÃO A-A

Escala 1:25



12  $\phi$ 5.0 C TOTAL=50

PREFEITURA MUNICIPAL TAPEJARA/RS

Obra:

REFORMA DA ESCOLA LEONEL DE MOURA BRISOLA

Detalhe:

REFORMA GERAL DA PARTE EXISTENTE DA ESCOLA, COBERTURA DA CIRCULAÇÃO E COBERTURA ENTRE A ESCOLA NOVA E O GINÁSIO

Prancha:

Depósito de gás

Proprietário:

PREFEITURA MUNICIPAL DE TAPEJARA

Prancha:

04

Responsável Técnico:

Arq. Julio Cesar Seidler CAU/RS A58203-4

Escala:

sem escala

Data:

Fevereiro-2024