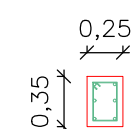


Carimbos

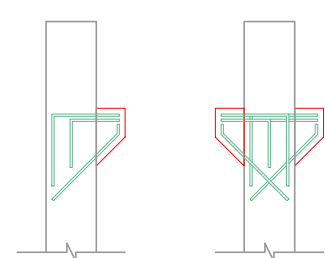
Pilares (B = 25 cm C = 35 cm)
6x (P01 - P02 - P03 - P04 - P05 - P06)



6 # 20.0mm sem emendas sem ganchos
estribos # 5.0mm cada 15 cm
cobrimento armadura 4 cm

Armaduras Pilares

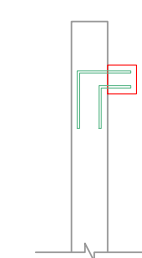
Consoles (V20x60)
8x (C01 - C02 - C03 - C04 - C05 - C06 - C07 - C08)



9 # 16.0mm sem emendas com ganchos
estribos # 6.3mm cada 5cm
cobrimento armadura 4 cm
utilizar aço CA 25

Armaduras Consoles

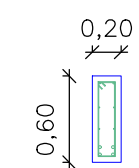
Consoles (V15x50)
6x (C01 - C02 - C03 - C04 - C05 - C06)



4 # 12.5mm sem emendas com ganchos
estribos # 6.3mm cada 5cm
cobrimento armadura 4 cm
utilizar aço CA 25

Armaduras Consoles

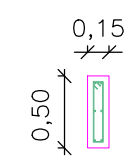
Vigas Apoio (B = 20 cm H = 60 cm)
4x (VA01 - VA02 - VA03 - VA04)



2 # 12.5mm sem emendas com ganchos
4 # 8.0mm sem emendas sem ganchos
2 # 20.0mm sem emendas sem ganchos
2 # 20.0mm sem emendas com ganchos
estribos # 5.0mm cada 15 cm
cobrimento armadura 4 cm

Armaduras Vigas Apoio

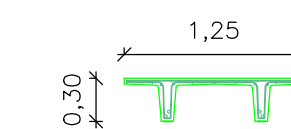
Vigas Travamento (B = 15 cm H = 50 cm)
3x (VT05 - VT06 - VT07)



2 # 12.5mm sem emendas com ganchos
2 # 12.5mm sem emendas sem ganchos
2 # 12.5mm sem emendas com ganchos
estribos # 5.0mm cada 15 cm
cobrimento armadura 4 cm

Armaduras Vigas Travamento

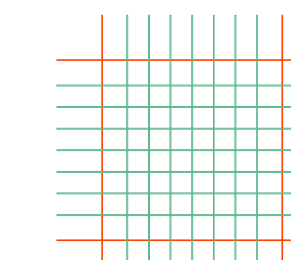
Lajes PI (B = 125 cm H = 30 cm)
7x (LPI01 - LPI02 - LPI03 - LPI04 - LPI05 - LPI06 - LPI07)



4 # 20.0mm sem emendas e com ganchos
4 # 12.5mm sem emendas e com ganchos
7 # 8.0mm sem emendas e sem ganchos
estribos # 5.0mm cada 15 cm
malha # 5.0mm 15x15 cm
cobrimento armadura 2,5 cm

Armaduras Lajes PI

Caapeamento Lajes (H = 8 cm)



malha # 5.0mm 15x15 cm com emendas intercaladas
cobrimento armadura 3,0 cm

Armaduras Caapeamento